

N.W. 1/4
SECTION 33, T.6N., R.2W., S.L.B. & M.

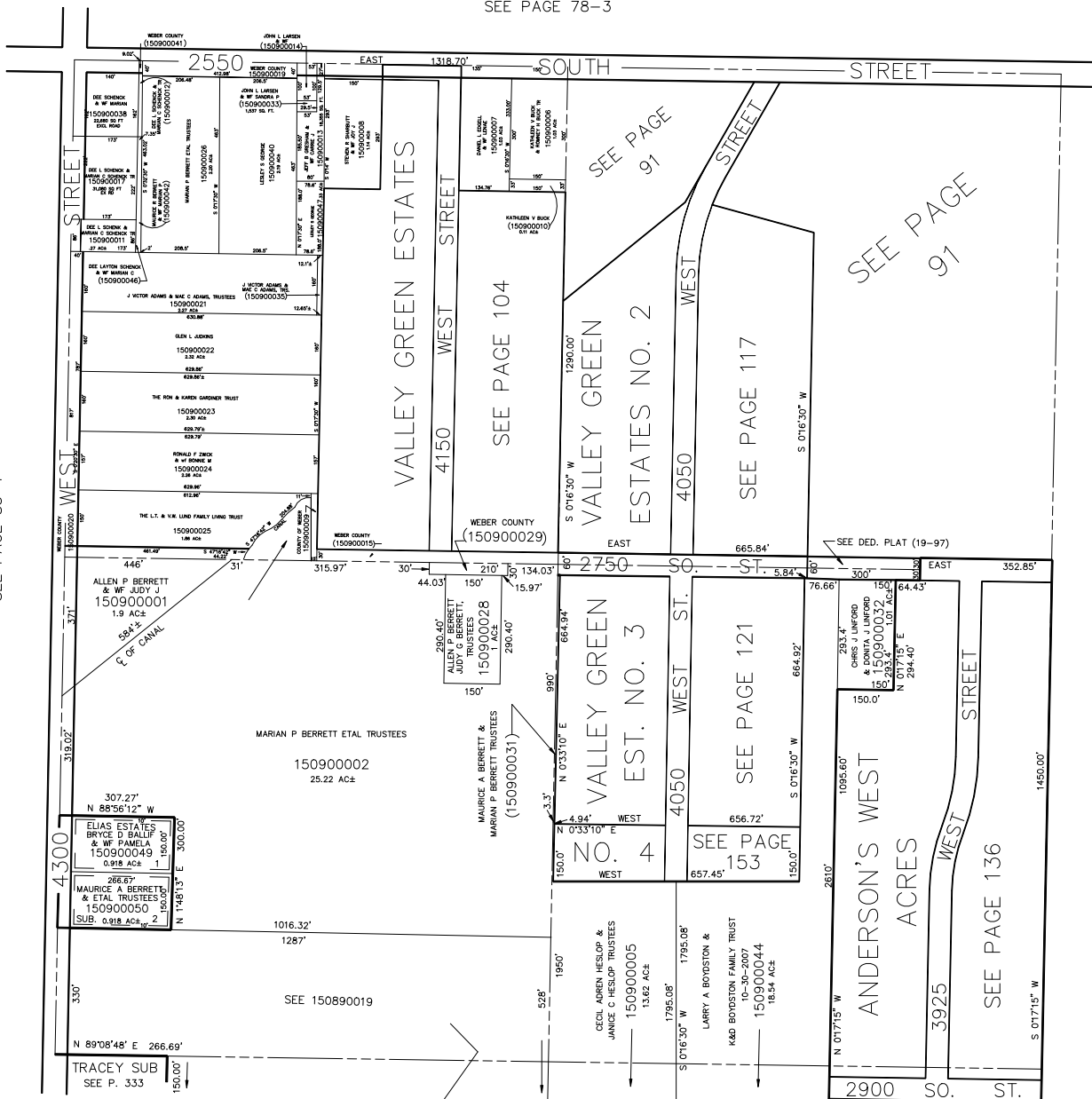
90

TAXING UNIT: 53

IN WEBER COUNTY
SCALE 1" = 200'

SEE PAGE 78-3

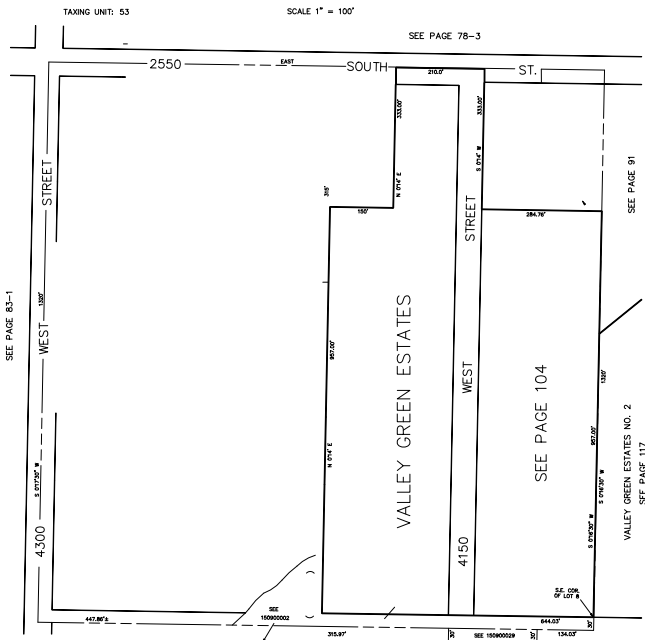
SEE PAGE 83-1



SEE PAGE 89

SEE PAGE 88

LHK 4-92



SEE PAGE 83-1

TAXING UNIT: 53

SCALE 1" = 100'

SEE PAGE 78-3

SEE PAGE 91

SEE PAGE 117